

vLoc3-Pro UTILITY LOCATOR

- Color-coded EM distortion warnings
- Offset vector locate mode
- Optional receiver/transmitter link
- Cloud-based data warehousing
- Internal data logging
- Optional Bluetooth connectivity

The vLoc3-Pro utility locator introduces new innovative tools for locating buried utilities assuring damage prevention while gathering information for analysis. With two sets of screened 3D antennas signal distortion is easily detected and displayed on the bright full color display. Along with classic locate screens the vLoc3 series locators offer new locate perspective screens of Vector Locate for fully automatic non-walk over locating, Transverse Graph showing both peak and null simultaneously providing immediate measurement of signal distortion, Plan View showing the relative orientation of the cable at any angle, and a new graphical Sonde screen with guidance arrows leading to the sonde location even when it is vertical.

The highly user configurable vLoc3 series contains eight passive locate modes, fault-find mode, SD (showing direction of outgoing current), and a range of configurable frequencies from 16Hz to 200 kHz. Visual and mechanical vibration alerts can also be configured by the user providing warnings for shallow depth, overload, overhead cables, and excessive swinging. Plug-in-play options for the receiver include optional Bluetooth module usable with external GPS devices and MLA (marker locator adapter) to locate buried markers.

Weatherproof speaker

Rechargeable Li-ion battery or six x AA Alkaline

USB Data Port

Accessory and charging socket

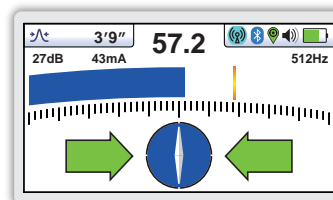
Optional radio link to receiver and transmitter

Two sets of 3D antennas

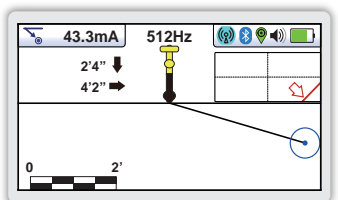
Optional plug-in MLA marker locator



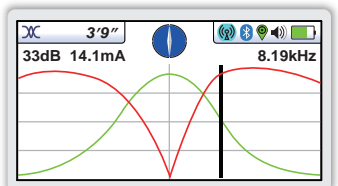
Classic Screen - as in previous vLoc locators, with the addition of three color-coded distortion levels



Vector Locate - shows orientation, line position, and distance relative to the locator in 3D



Transverse Plot Screen - is used to display the peak and null to compare distortion shape

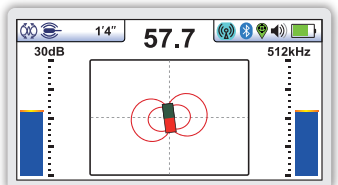


High visibility 4.3"/10cm LCD

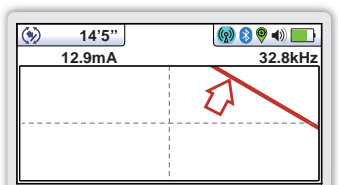
Optional Bluetooth module

High impact ABS injected molded housing

Sonde Screen - arrow guidance showing direction of the sonde and depth of cover

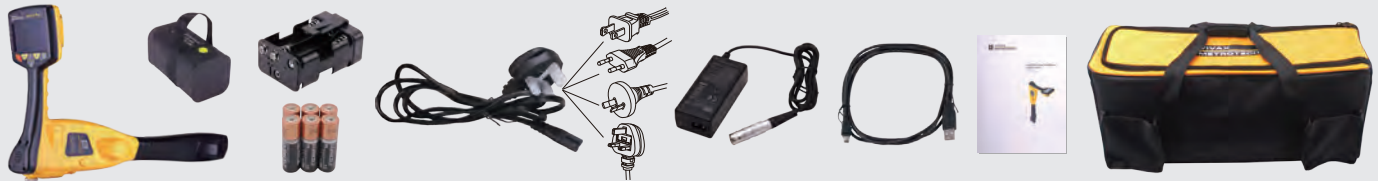


Plan View Screen - displays the theoretical line in 2D from above ground in omnidirectional mode



vLoc3-Pro Receiver Specifications	
Construction	High impact ABS injection molded housing
Weight & Dimensions	4.6lbs (2.1kg) / 12.6in(L) x 4.9in(W) x 26.6in(H) (321mm x 124mm x 676mm)
Display	Transmissive 480 x 272 Pixel, 16-bit Color, High Visibility LCD, 4.3"
Battery options	Rechargeable custom Lithium-ion batteries with 100-240V AC mains charger Six x AA Alkaline batteries
Battery life	Lithium-ion – typically 27-hours intermittent use at 70°F (21°C) Alkaline – typically 12 hours intermittent use at 70°F (21°C)
Operating frequencies	Configurable frequencies from 16Hz to 200 kHz Power - 50Hz and 60Hz Radio - 10kHz - 22.7kHz bandwidth Signal Direction - enhanced product model giving direction of outgoing current
Operating modes	Classic Locate (Bar graph), Transverse Graph Mode, Plan View (Omni Directional) Vector Locate (Lateral Position & Depth), Sonde Locate
Data logging and transfer	50 Million records - Records include depth, current, frequency, mode, gain setting, signal strength, GPS coordinate, date and time (if Bluetooth active) Download data from receiver using MyLocator3 desktop, save as xlx, txt, shp, kml files
Environmental	IP65 and NEMA 4

What's in the box



Popular Accessories



Transmitter Link



Fault Locator



Vehicle Charging Lead



Sondes



Remote Antenna

Compatible Transmitters



Loc-10Tx 10-Watt



Loc-5STx 5-Watt



Loc-5DTx 5-Watt Dual Output



Loc-1Tx 1-Watt



VM-550FF / VM-560FF 1-Watt

Local Vivax-Metrotech Distributor:



雷迪有限公司
Radiolocation Limited

11/F Long To Building,
654-656 Castle Peak Road, Hong Kong
Tel (852) 2803 5881 Fax (852) 2803 5863
www.radiolocation.com.hk



ISO 9001
FS593165



ISO 9001
FS593165

Allied Power | 奥华
We Empower Your Business

Unit B, 11/F Long To Building,
654-656 Castle Peak Road,
Lai Chi Kok, Kowloon, Hong Kong

Tel: +852 3746 9033

Fax: +852 2120 8765

Email: contact@alliedpower.com.hk

Web: www.alliedpower.com.hk



V1.2